

Notes of Survey.

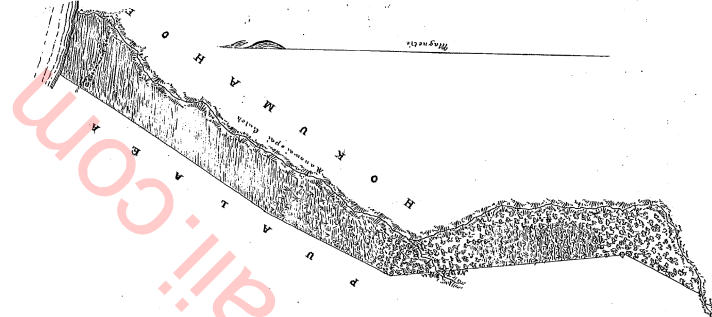
Memoire opâe Pilo Hawaii

*According to Certificate of Boundary Commission
March 20th 1878*

*6-17-78
G. D. Byrnes
Survey by Astronomical*

BEARINGS	DISTANCES		REMARKS	REMARKS
	Course	Length		
1. S. 88° 10' W. 1/4	11.00		<p>Commencing at the water in the Punahoa Bay, at the 1800 feet elevation of the beach and low of the water, as follows:</p> <p>To the corner of the 10-acre lot, the corner of the corner. Then from the 1800 feet elevation to the 1800 feet elevation.</p> <p>To the corner of the 10-acre lot, the corner of the corner. Then from the 1800 feet elevation to the 1800 feet elevation.</p> <p>To the corner of the 10-acre lot, the corner of the corner. Then from the 1800 feet elevation to the 1800 feet elevation.</p>	
2. S. 88° 10' W. 1/4	2.00			
3. S. 88° 10' W. 1/4	55.00			
4. S. 88° 10' W. 1/4	87.00			
5. S. 88° 10' W. 1/4	57.00			
6. S. 88° 10' W. 1/4	57.00			
7. S. 88° 10' W. 1/4	24.00			
8. S. 88° 10' W. 1/4	24.00			
9. S. 88° 10' W. 1/4	55.00			
10. S. 88° 10' W. 1/4	55.00			
11. S. 88° 10' W. 1/4	12.00			
12. S. 88° 10' W. 1/4	24.00			
13. S. 88° 10' W. 1/4	24.00			
14. S. 88° 10' W. 1/4	18.00			

Plan of Survey.



*Map by D.H. Hitchcock
Oct. 1878
Revised and copied by
C. S. Hitchcock
June 1877*

