

Plan of Survey.

Notes of Survey.

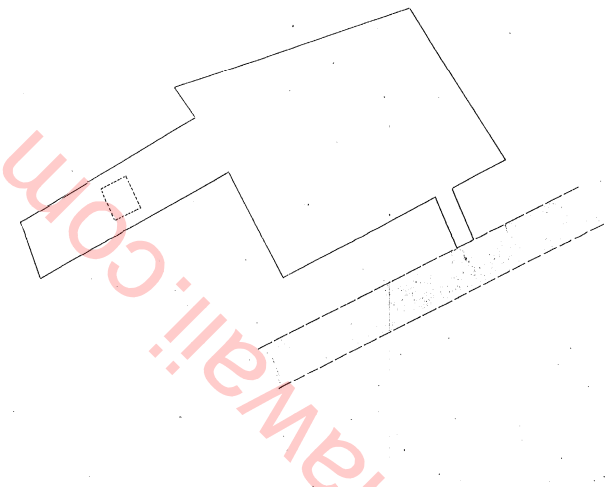
Mokuaia Weirua Sakaia Mani

According to Notes of Survey

Survey of 1828

BEARINGS	DISTANCES		REMARKS
	Chains	Links	
1. N. 75° E.	0.20		Beginning at the South side of the Highway on the main Street and running
2. S. 81° 45' E.	0.22		
3. N. 88° 30' E.	2.51		
4. N. 80° 40' W.	3.51		
5. S. 87° 30' W.	0.55		
6. N. 81° 45' W.	2.51		
7. S. 65° 30' W.	0.73		
8. S. 80° 45' E.	2.71		
9. S. 82° 45' W.	1.51		
10. S. 82° 45' E.	3.51		
11. S. 75° W.	0.22		
12. S. 81° 45' E.	0.51		

A plan of Survey
Containing an Area of 1000 Acres



Map by W.P. Alexander
Reduced and Copied by
E.S. W. Hodge
Jan 1877



WWW.CROWDFUNDER.COM