

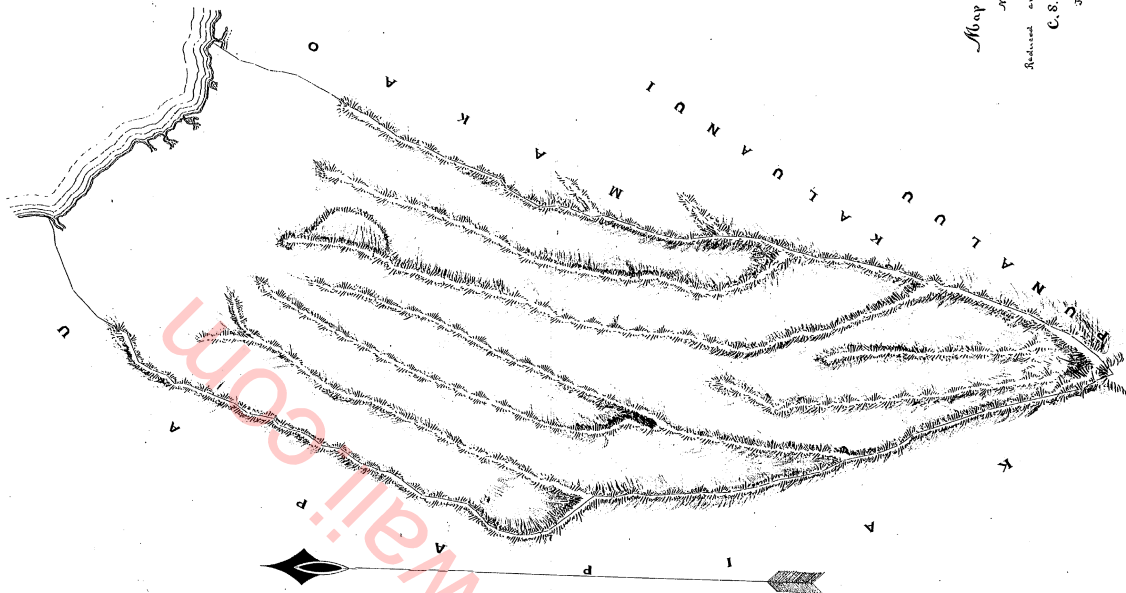
Notes of Survey.

Hauula Honolulu Oahu

Survey by W. W. Wheeler
May 1854

BEARINGS	DISTANCES		BEARINGS	DISTANCES		REMARKS
	Chains	Links		Chains	Links	
S 57° 34' W						Commencing at the north angle where lines on the one side the boundary runs along the base of Kapapa to a hole tree
S 78° 20' W						to the side of a low bank
S 71° 30' W						to a large oak tree up a ridge
S 67° 05' W						to a post where along a ridge - a short line more exactly directly across by Kapapa to a ridge the boundary of Punaluu shows
S 60° 20' W						North Eadley along a ridge bounded by the lands of Punaluu Punaluu, and Punaluu to a post bearing S 37° 00' W 1/2 mile from a hole tree run over on the bank with a white wall at the bottom of the white stone along Punaluu to a hole tree
S 50° 30' W						to a fence on the land side of a grass.
S 60° 10' W						along a few feet to a hole tree along one of hole trees
N 8° 05' W						along the side of the mound to the sea shore.
N 31° 31' E						North West along the sea shore to commencement.
						Area 1576 Acres.

Plan of Survey.



Map by W. W. Wheeler
May 1854
Revised and corrected by
C. S. Wittredge
Jan 1857

Scale 1" = 1200'