

Palau

Notes of Survey.

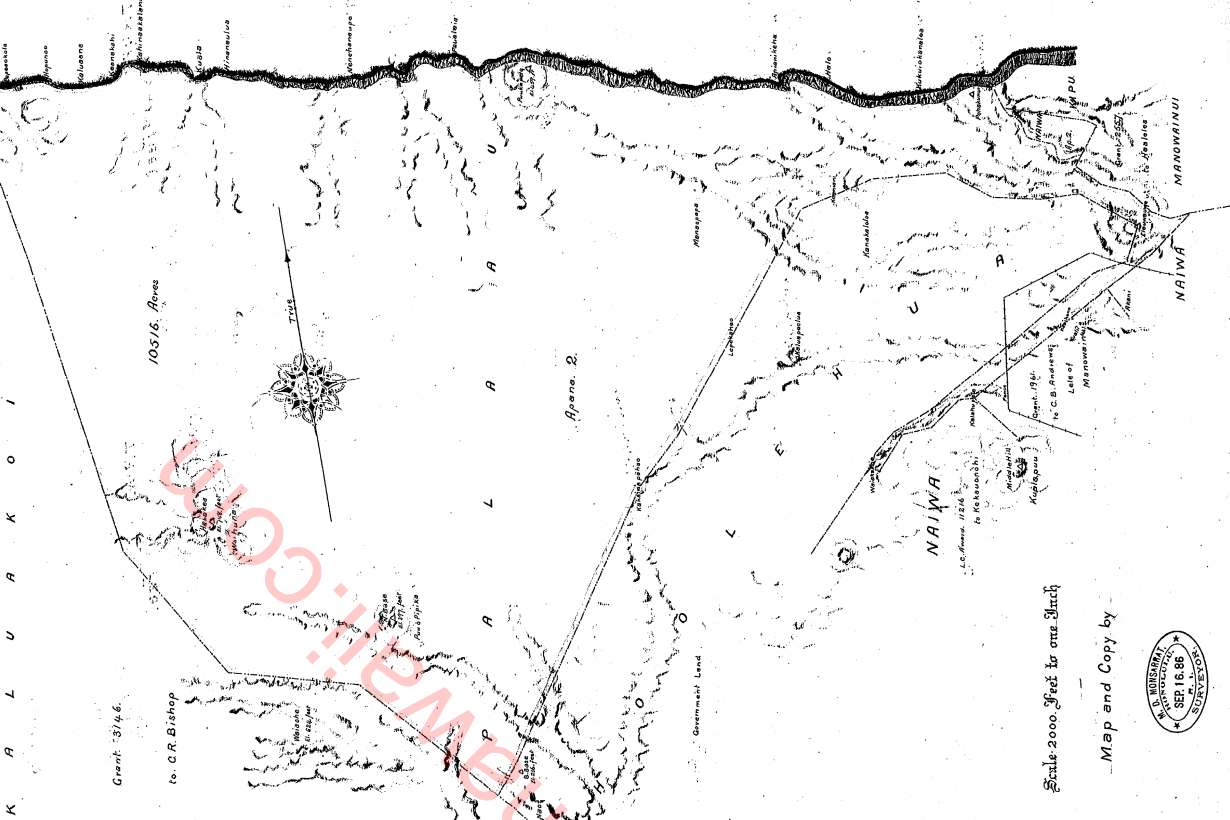
Molokai

Surveyed by
M. S. WILKINSON
HONOLULU, T. H. I.

1885.

TRUE BEARINGS	DISTANCES	REMARKS	TRUE BEARINGS	DISTANCES	REMARKS
DEGREES	FEET		DEGREES	FEET	
1. S. 17° 52' N		Commencing at a cross of stones at the sea shore in a place called <i>Alomoni</i> . From which stone the <i>S. P. Survey Station</i> was run. It is 10' N. by <i>Survey Station</i> .	20. S. 79° 01' W	1065	Along <i>Northshore</i> to a stone marked thus
2. S. 9° 25' E		Along <i>Northshore</i> to a stone marked thus	21. S. 71° 59' W	7499	Along <i>Northshore</i> to a cross on a stone at a cross on a stone
3. S. 10° 48' E		Along <i>Northshore</i> to a cross on a stone	22. S. 67° 59' W	1995	Along <i>Northshore</i> along edge of gulch
4. S. 8° 35' E		Along <i>Northshore</i> to a cross on a stone	23. S. 20° 18' W	880	Along <i>Northshore</i> to a cross on a stone
5. S. 8° 38' E		Along <i>Northshore</i> to a cross on a stone	24. S. 20° 17' W	976.5	Along <i>Northshore</i> along edge of gulch
6. S. 7° 46' E		Along <i>Northshore</i> to a cross on a stone			Along <i>Northshore</i> along edge of gulch
7. S. 4° 18' E		Along <i>Northshore</i> to a cross on a stone			Along <i>Northshore</i> along edge of gulch
8. S. 4° 15' E		Along <i>Northshore</i> to a cross on a stone			Along <i>Northshore</i> along edge of gulch
9. N. 55° 49' E		Along <i>Northshore</i> to a cross on a stone			Along <i>Northshore</i> along edge of gulch
10. N. 32° 21' E		Along <i>Northshore</i> to a cross on a stone			Along <i>Northshore</i> along edge of gulch
11. N. 24° 17' E		Along <i>Northshore</i> to a cross on a stone			Along <i>Northshore</i> along edge of gulch
12. N. 37° 5' E		Along <i>Northshore</i> to a cross on a stone			Along <i>Northshore</i> along edge of gulch
13. N. 75° 35' E		Along <i>Northshore</i> to a cross on a stone			Along <i>Northshore</i> along edge of gulch
14. S. 24° 17' E		Along <i>Northshore</i> to a cross on a stone			Along <i>Northshore</i> along edge of gulch
15. S. 23° 55' E		Along <i>Northshore</i> to a cross on a stone			Along <i>Northshore</i> along edge of gulch
16. S. 37° 2' E		Along <i>Northshore</i> to a cross on a stone			Along <i>Northshore</i> along edge of gulch
17. N. 89° 40' E		Along <i>Northshore</i> to a cross on a stone			Along <i>Northshore</i> along edge of gulch
18. S. 57° 29' E		Along <i>Northshore</i> to a cross on a stone			Along <i>Northshore</i> along edge of gulch

Plan of Survey.



Scale 2000 Feet to one Inch

Map and Copy by



(Continued from Page 101)

104