

Notes of Survey.

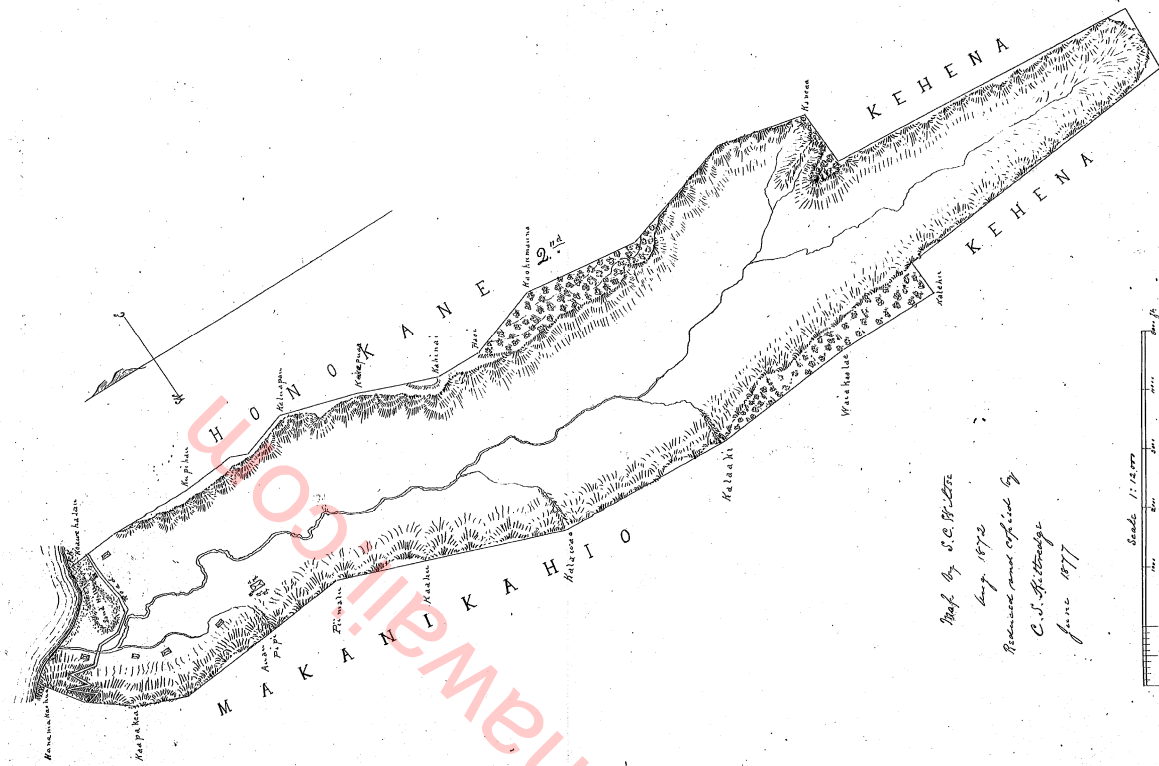
Pololu North Side Hawaii

According to certificate of Boundary Commission
 dated 10th 1873

Vol 14
 B. H. G. G. G.
 Surveyed by S. C. WHITE

BEARINGS	DISTANCES		REMARKS	DISTANCES		REMARKS
	Course	Length		Course	Length	
1. S. 87° E.	12.00		Beginning at a well marked P.M. on the beach at Pololu, where the line of the boundary between the Pololu and the Pololu lands was marked in 1843, and from thence			Open of commencement containing 1843 line marks
2. S. 87° E.	20.00		to a large tree trunk, and from thence			
3. S. 87° E.	14.00		to a large tree trunk, and from thence			
4. S. 87° E.	12.00		to a large tree trunk, and from thence			
5. S. 87° E.	20.00		to a large tree trunk, and from thence			
6. S. 87° E.	20.00		to a large tree trunk, and from thence			
7. S. 87° E.	20.00		to a large tree trunk, and from thence			
8. S. 87° E.	20.00		to a large tree trunk, and from thence			
9. S. 87° E.	20.00		to a large tree trunk, and from thence			
10. S. 87° E.	20.00		to a large tree trunk, and from thence			
11. S. 87° E.	20.00		to a large tree trunk, and from thence			
12. S. 87° E.	20.00		to a large tree trunk, and from thence			
13. S. 87° E.	20.00		to a large tree trunk, and from thence			
14. S. 87° E.	20.00		to a large tree trunk, and from thence			
15. S. 87° E.	20.00		to a large tree trunk, and from thence			
16. S. 87° E.	20.00		to a large tree trunk, and from thence			
17. S. 87° E.	20.00		to a large tree trunk, and from thence			
18. S. 87° E.	20.00		to a large tree trunk, and from thence			
19. S. 87° E.	20.00		to a large tree trunk, and from thence			
20. S. 87° E.	20.00		to a large tree trunk, and from thence			
21. S. 87° E.	20.00		to a large tree trunk, and from thence			
22. S. 87° E.	20.00		to a large tree trunk, and from thence			
23. S. 87° E.	20.00		to a large tree trunk, and from thence			
24. S. 87° E.	20.00		to a large tree trunk, and from thence			
25. S. 87° E.	20.00		to a large tree trunk, and from thence			
26. S. 87° E.	20.00		to a large tree trunk, and from thence			
27. S. 87° E.	20.00		to a large tree trunk, and from thence			

Plan of Survey.



Map by S. C. WHITE
 Aug 1873
 Revises map of 1872
 C. S. G. G. G.
 June 1877

