

Notes of Survey.

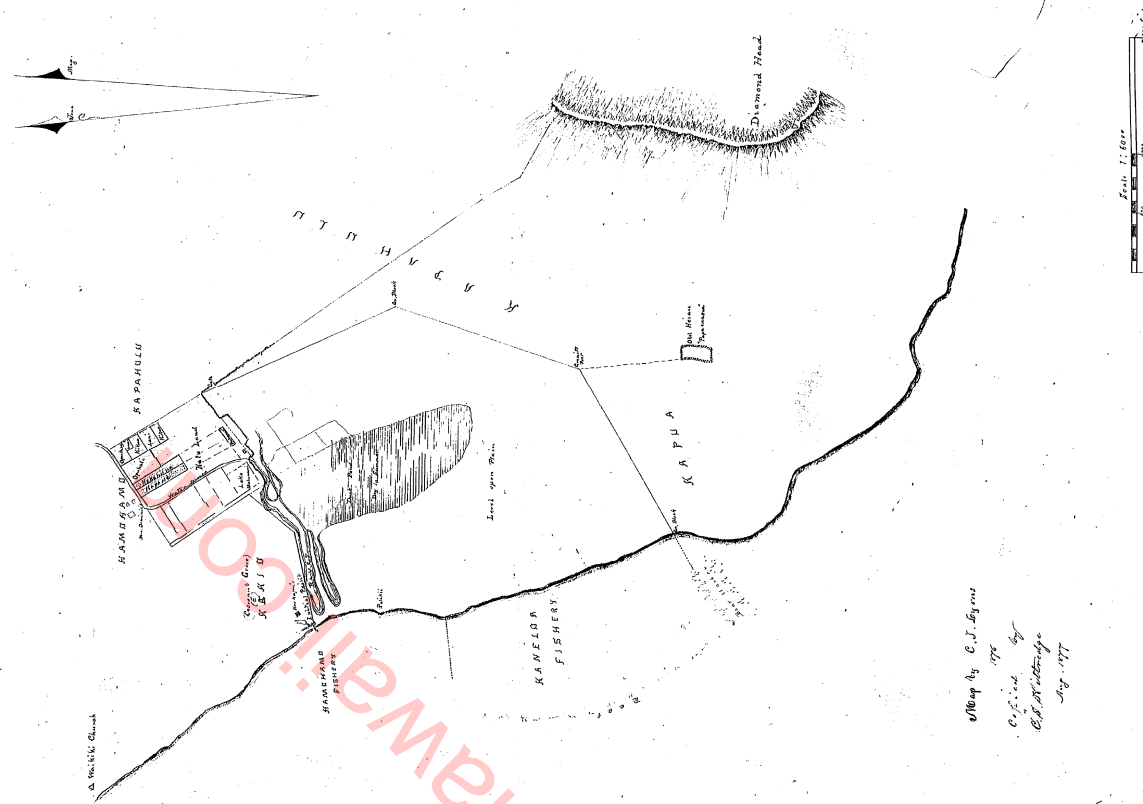
W. Carolee  
Wahiki Bone Oahu

Surveying & Clearing

Survey by C. J. Byrnes

BEARING	DISTANCE	REMARKS	BEARING	DISTANCE	REMARKS
Course	Chain		Course	Chain	
		Beginning at a granite post near the beach at the West end of the road, where the King's plantation station on the summit of Diamond Head bears S. 41° 22' E. an old 2700 feet, over which is also 200 feet south from the A. and is a nearly level, called the old high-water mark, bearing 490.1.			
	3600	to a granite post at the intersection of the road with the beach.			
	1974	along the beach to a granite post.			
	124	to a granite post.			
	124	to a granite post.			
	124	to a granite post.			
	568	to a granite post.			
	77	to a granite post.			
	58	to a granite post.			
	719	to a granite post.			
		Close - 1st Stone			

Plan of Survey.



Map by C. J. Byrnes  
1917  
C. J. Byrnes  
C. J. Byrnes  
1917